



# PROFESSIONAL LIFTING EQUIPMENT MAKING

## INTRODUCTION

A jib crane is a versatile lifting device widely used in industrial settings, consisting of a horizontal arm (jib) mounted on a vertical support.



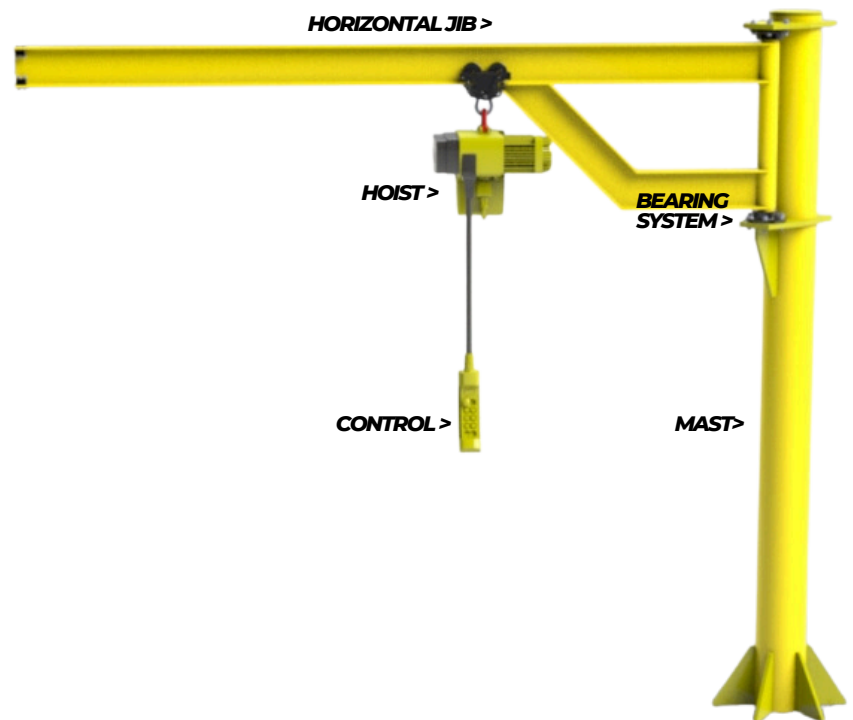
**CUSTOMIZED  
SOLUTION**



**DOSH  
APPROVED  
DESIGN**

## JIB CRANE

### 3D ILLUSTRATION



### KEY COMPONENT:

- **Horizontal jib:** The arm that extends from the mast, supporting the hoist and machine tending.
- **Mast or support column:** The vertical structure that support jib crane.
- **Bearing system :** Allow Jib crane rotate horizontally.
- **Control :** devices used to operated the crane, such as pendant control or remote system



ENGINEER  DESIGNER  FABRICATOR



# PROFESSIONAL LIFTING EQUIPMENT MAKING

## SPECIFICATION

### DESIGN CODE

BS 5950 : Part 1 Structural use of steelwork in building

BS 2573 : Rules for the design of cranes

BS 4360: 1990 Specification for weldable structural steels

## CONTACT

US NOW



+07-288 2287 (Admin)



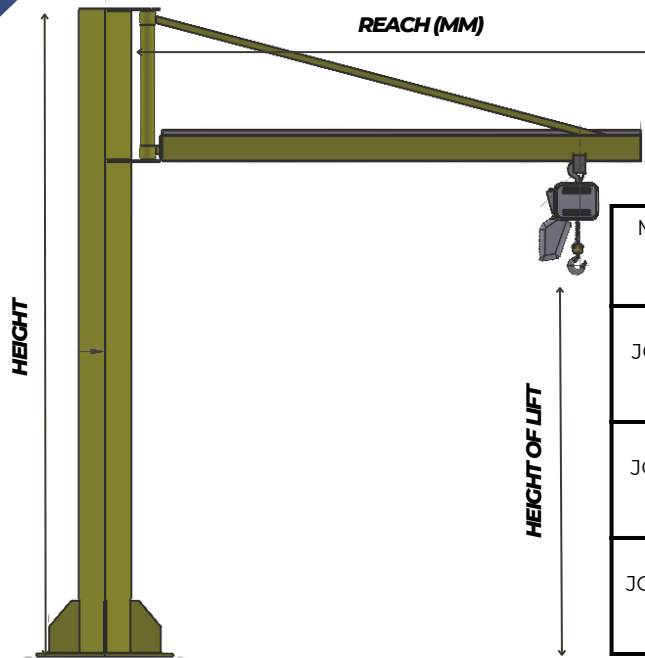
admin@acolite.com.my/  
enquiry@acolite.com.my



KAWASAN PERINDUSTRIAN  
MAJU JAYA

## KEY FEATURES:

- **Manufacturing:** Material handling, assembly lines, and machine tending.
- **Construction:** lifting and positioning building materials.
- **Warehousing:** Organizing heavy items and maximizing space utilization.
- **Shipping and logistics:** loading and uploading cargo
- **Maintenance and repair:** Assisting technicians with heavy equipment.



Model no	Specs (kg)	Reach (m)	Height of lift (m)
JC -250	250	3.00	TO 6 METER HEIGHT
		6.00	
JC -500	500	3.00	
		6.00	
JC -1000	1000	3.00	
		6.00	

In view of our constant endeavour to improve quality of our products, we reserve the right to alter or change specification without prior notice. All photographs shown in this publication are representative in purpose and to be used for reference purpose only. With this information is given in good faith, no warranty or representation is given concerning such information which must not be taken for establishing any contract or other commitment binding on TESB.

\*For actual details and specifications, please refer the TESB offer document.\*



ENGINEER



DESIGNER



FABRICATOR